



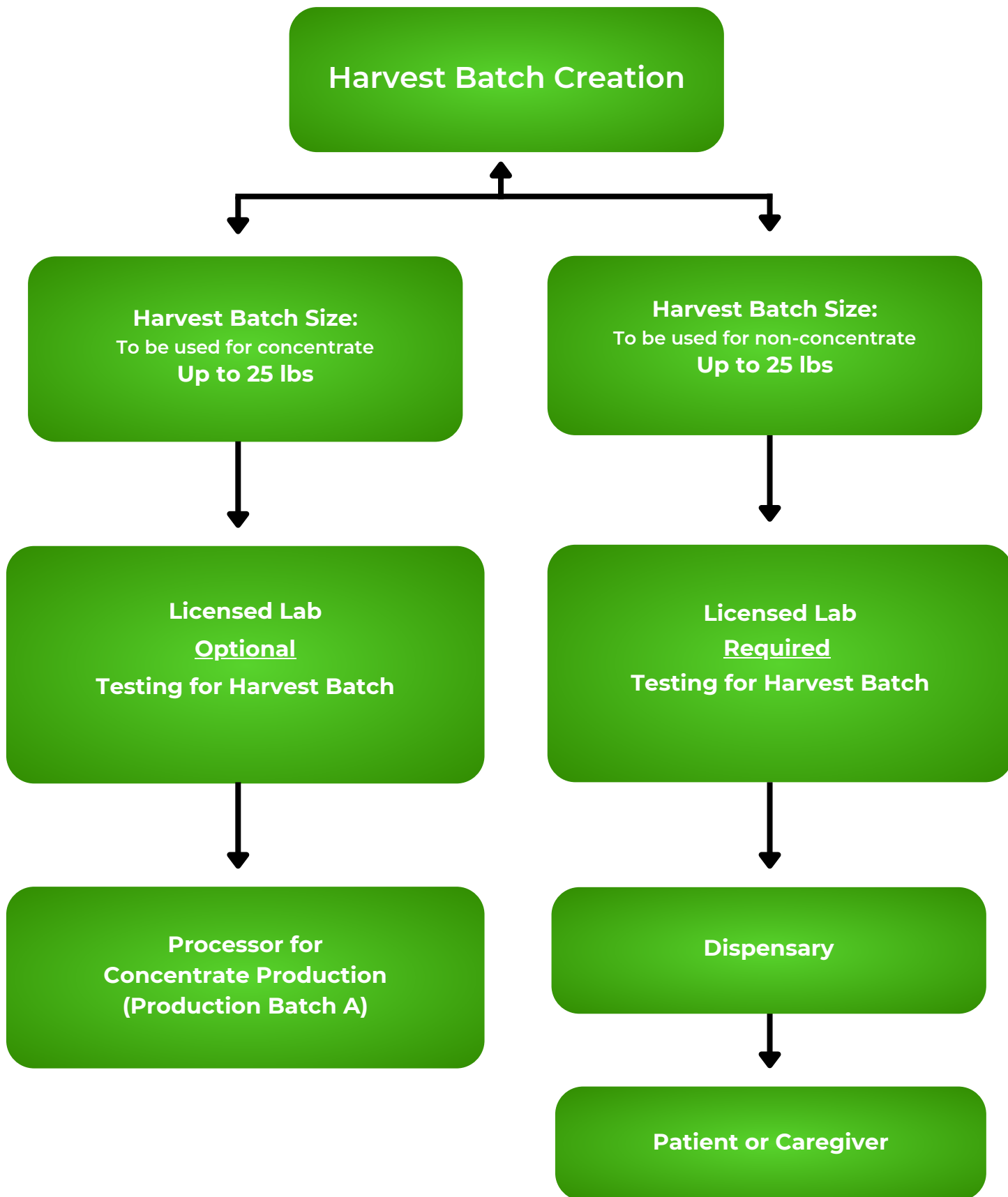
**MISSISSIPPI MEDICAL
CANNABIS PROGRAM**

MISSISSIPPI STATE DEPARTMENT OF HEALTH

Testing Procedure Guide

What is it?	Who is making it?	Which testing process do I follow?
Flower for Dispensary Sales Ex: sold in jars at dispensary	Cultivator	Harvest Batch
Flower for Concentrate Production Ex: sold as biomass to processor	Cultivator	Harvest Batch
Concentrate for Dispensary Sales Ex.: wax, shatter	Processor	Production Batch A
Concentrate for Processing at Another Facility Ex. Distillate	Processor	Production Batch A
Concentrate & Final Product Made at Same Facility Ex. vapes, topicals, tinctures, cookies brownies, candies, gummies, beverages, etc.	Processor	Concentrate & Final Product Combined
Final Product Ex. vapes, topicals, tinctures, cookies brownies, candies, gummies, beverages, etc.	Processor	Production Batch B
Infused Pre-Rolls Ex. Pre-Rolls with added kief, RSO, flavors, or other ingredients	Processor	Production Batch B
Non-Infused Pre-Rolls	Cultivator, Processor	Non-Infused Pre-Rolls
Non-Infused Pre-Rolls	Processor	Non-Infused Pre-Rolls
Kief *Kief sold as a standalone product	Cultivator, Processor	Kief

Note: Only the license type listed in the "Who made it?" category can make that type of product.





MISSISSIPPI MEDICAL CANNABIS PROGRAM

MISSISSIPPI STATE DEPARTMENT OF HEALTH

Testing Process - Production Batch A

Standard Harvest Batch Testing

Harvest Batch Size:
To be used for concentrate
Up to 25 lbs

Licensed Lab
Optional
Testing for Harvest Batch

Production Batch A Testing

Processor
(Production Batch A)
No size limit per regulations

Licensed Lab
Optional
Testing for Harvest Batch

Processor for Final Processing
(Production Batch B)

Dispensary

Patient or Caregiver

Licensed Lab
Required
Testing for Harvest Batch

Dispensary

Patient or Caregiver



**Standard Harvest Batch
Testing**

Harvest Batch Size:
To be used for concentrate
Up to 25 lbs

Licensed Lab
Optional
Testing for Harvest Batch

**Concentrate &
Final Product Combined**

Processor
(Production Batch A)
No size limit set by regulations

Licensed Lab tests for potency*
*Suggested for final product batch size
(Optional)

The same Processor makes the final product
(Production Batch B)
No size limit per regulations

Licensed Lab
Required
Testing for Production Batch A

Dispensary

Patient or Caregiver



MISSISSIPPI MEDICAL CANNABIS PROGRAM

MISSISSIPPI STATE DEPARTMENT OF HEALTH

Testing Process - Production Batch B

Standard Harvest Batch Testing

Harvest Batch Size:
To be used for concentrate
Up to 25 lbs

Licensed Lab
Optional
Required Testing for Harvest Batch

Production Batch A Testing

Processor
(Production Batch A)
No size limit set by regulations. See also R.1.6.3 & 4

Licensed Lab
Optional Intermediate Form
Testing for Production Batch A

Microbials, Mycotoxins, Residual Solvents & Chemical
Residue, Metals, Pesticides, Foreign Material & Filth, THC
Potency. (Terpene Type optional)

Production Batch B Testing

Processor for Final Processing
(Production Batch B)
No size limit per regulations. See also R.1.6.3 & 4

Licensed Lab
Required Testing for Final Form

Microbials, Mycotoxins, Residual Solvents & Chemical
Residue, Metals, Pesticides, Foreign Material & Filth, THC
Potency. (Terpene Type Optional)

Dispensary

Patient or Caregiver



MISSISSIPPI MEDICAL CANNABIS PROGRAM

MISSISSIPPI STATE DEPARTMENT OF HEALTH

Testing Process - Non-Infused Pre-Rolls Cultivators & Processors

Standard Harvest Batch Testing

Harvest Batch Size:
To be used for non-concentrate
Up to 25 lbs

Licensed Lab
Optional
Testing for Harvest Batch
Pesticides, Heavy Metals, Microbials, Foreign Material & Filth,
Water Activity, Moisture Content, THC Potency, and Terpene
Type & Concentration

Non-Infused Pre-Rolls Testing

Infused Pre-Rolls Testing (Processors Only)

Processor creates Non-Infused Pre-Rolls from a single harvest batch.
Batch size:
Up to 25 lbs
*See also R.1.6.2.

Licensed Lab
Conducts required tests for Non-Infused Pre-Rolls from a single batch
Heavy Metals, Foreign Material & Filth, THC Potency

Dispensary

Patient or Caregiver

Processor collects up to 25 lbs of flower from multiple harvest batches to create new homogenized batch and the creates Non-Infused Pre-Rolls.
*See also R.1.6.2

Licensed Lab
Required Testing for Harvest Batch
Pesticides, Heavy Metals, Microbials, Foreign Material & Filth, Water Activity, Moisture Content, THC Potency, and Terpene Type & Concentration

Dispensary

Patient or Caregiver