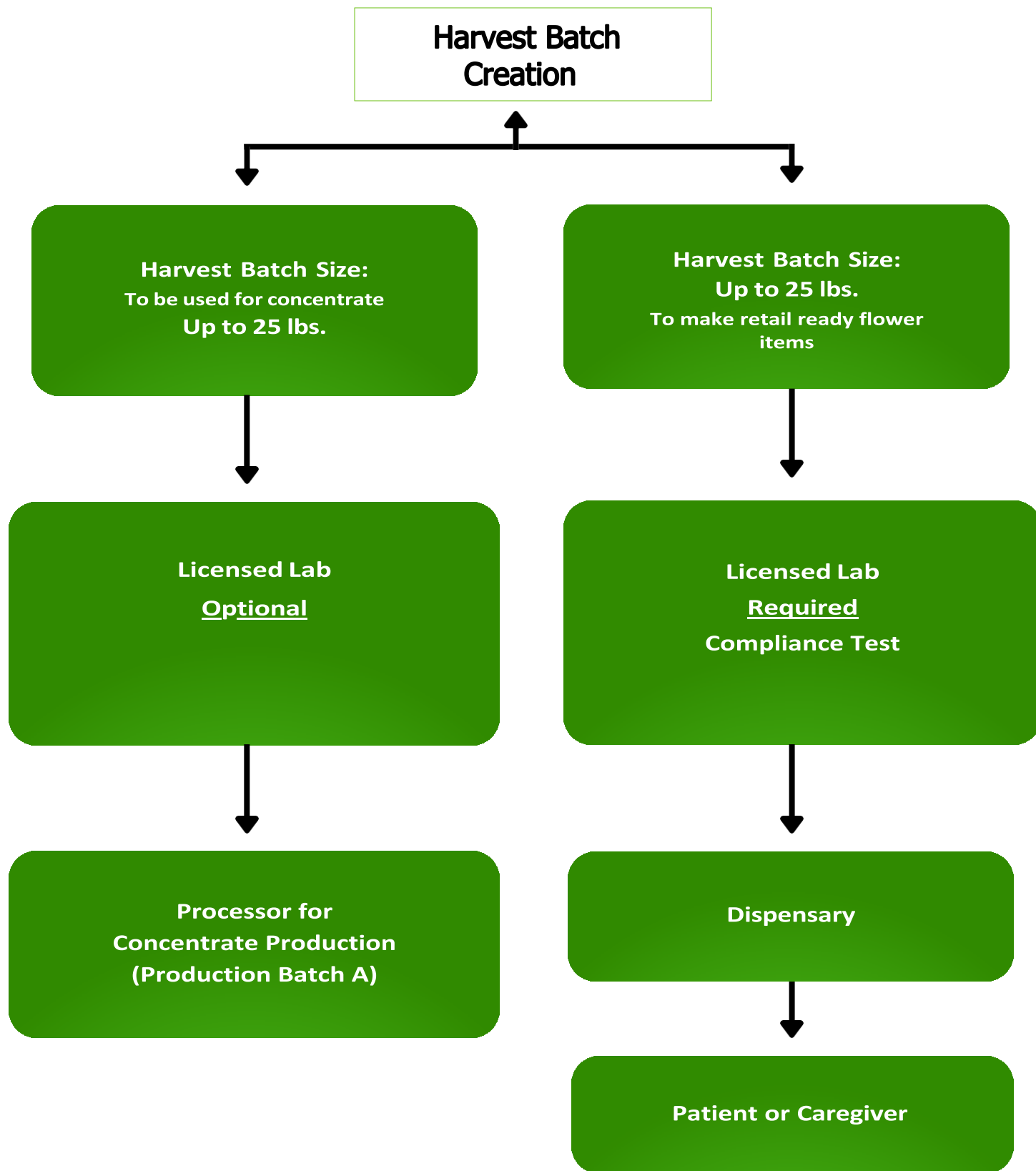


What is it?	Who is making it?	Which testing process do I follow?
Flower for Dispensary Sales Ex: sold in jars at dispensary	Cultivator	Harvest Batch
Flower for Concentrate Production Ex: sold as biomass to processor	Cultivator	Harvest Batch
Concentrate for Dispensary Sales Ex.: wax, shatter	Processor	Production Batch A
Concentrate for Processing at Another Facility Ex. Distillate	Processor	Production Batch A
Concentrate & Final Product Made at Same Facility Ex. vapes, topicals, tinctures, cookies brownies, candies, gummies, beverages, etc.	Processor	Production Batch B
Final Product Ex. vapes, topicals, tinctures, cookies brownies, candies, gummies, beverages, etc.	Processor	Production Batch B
THC Infused Pre-Rolls Ex. Pre-Rolls with added kief, RSO, concentrates	Processor	Production Batch B
Raw Pre-Rolls	Cultivator, Processor	Raw Pre-Rolls- Production Batch
Non- THC Infused Pre-Rolls	Processor	Non-THC Infused Pre-Rolls – Production Batch
Kief *Kief sold as a standalone product	Processor	Kief

Note: Only the license type listed in the "Who made it?" category can make that type of product.



Standard Harvest Batch Testing

Harvest Batch Size:
To be used for concentrate
Up to 25 lbs.

Licensed Lab
Optional

Production Batch A Testing

Processor
(Production Batch A)
No size limit per regulations

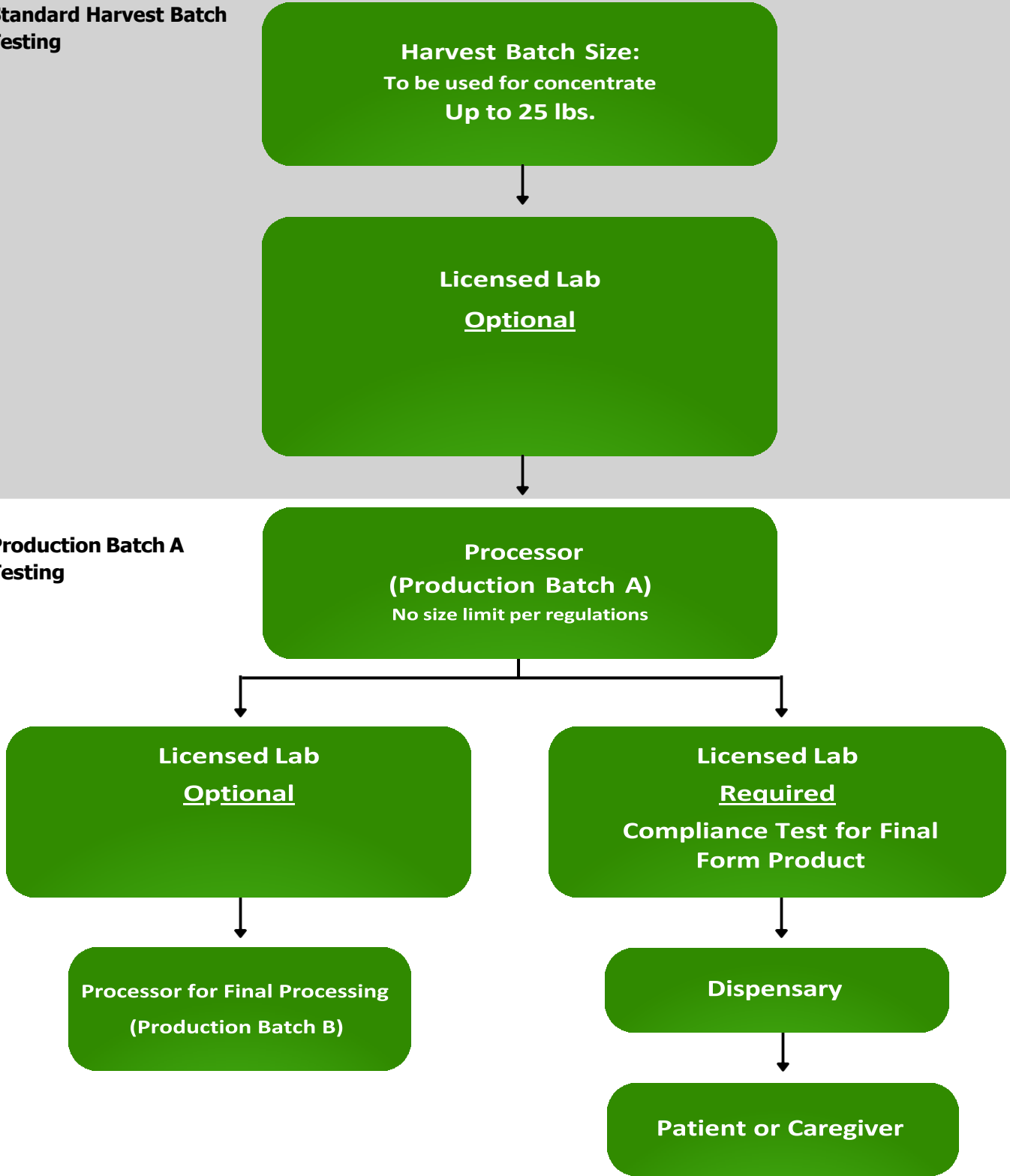
Licensed Lab
Optional

Processor for Final Processing
(Production Batch B)

Licensed Lab
Required
Compliance Test for Final Form Product

Dispensary

Patient or Caregiver



Standard Harvest Batch Testing

Harvest Batch Size:
To be used for concentrate
Up to 25 lbs.

Licensed Lab
Optional

Concentrate & Final Product Combined

Processor
(Production Batch A)
Batch size in regulations. See R. 5.3.5, 6, & 8

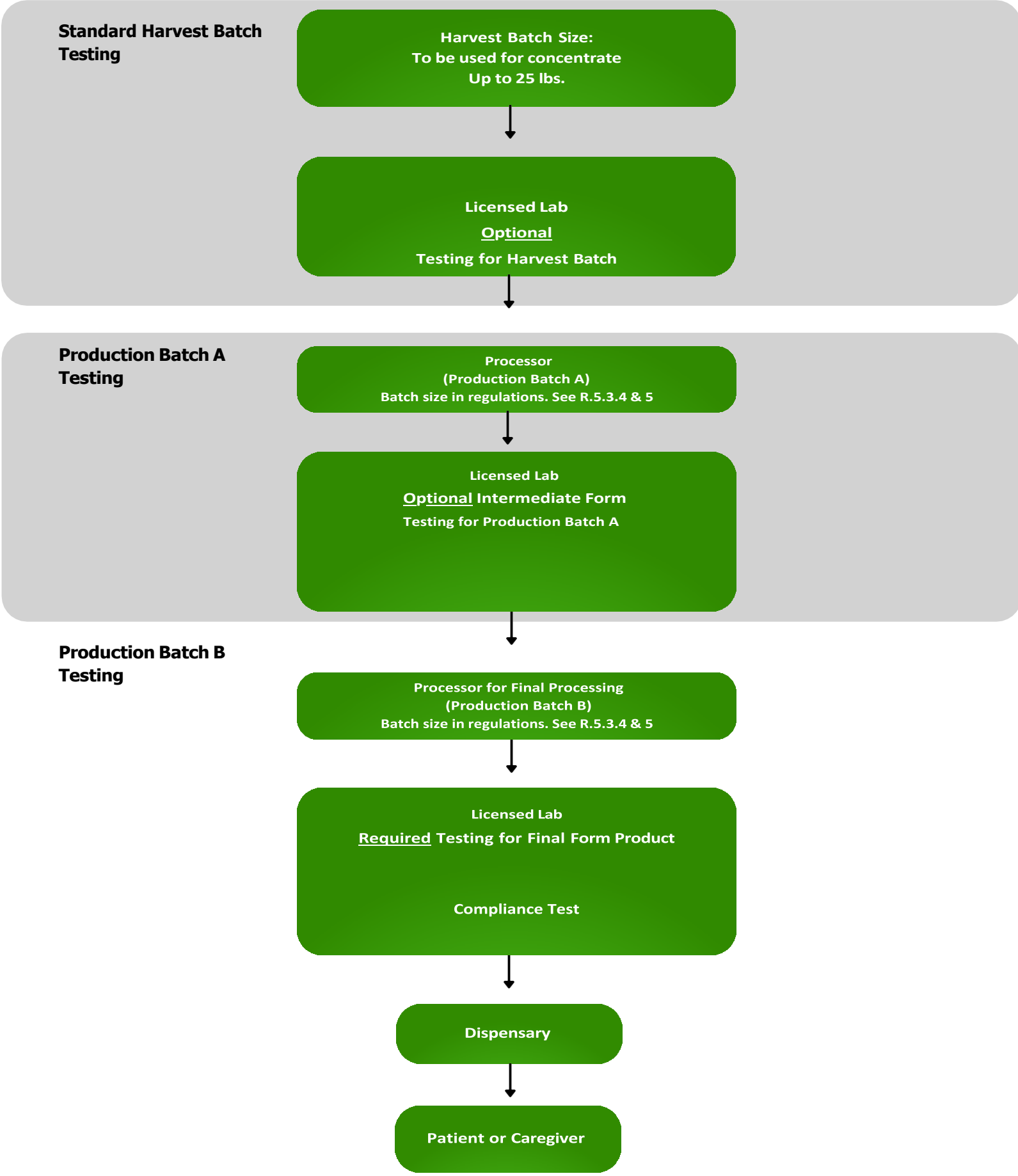
Licensed Lab tests for potency*
*Suggested for final product batch size
(Optional)

The same Processor makes the final product
(Production Batch B)
Batch size in regulations. See R. 5.3.4, 5 & 6

Licensed Lab
Required
Compliance Testing for Final Form Product

Dispensary

Patient or Caregiver



**Standard Harvest Batch
Testing**

Harvest Batch Size:
To be used for Pre-Rolls
Must be single harvest/strain
Up to 25 lbs.

Licensed Lab
Optional
Testing for Harvest Batch

Production Batch required
Batch size in regulations. See R. 5.3.7

Cultivator or Processor makes the
Raw Pre-Rolls using a Production Batch.
See R. 1.2.111

The Production Batch is entered into
Metrc at the end of the day and is the
actual count of pre-rolls made in one
day. See R. 1.2.13 for proper naming

Licensed Lab
Required
Compliance Test in Final Form

Dispensary

Patient or Caregiver

Standard Harvest Batch Testing

Harvest Batch Size:
To be used for non-concentrate
Up to 25 lbs.

Licensed Lab
Optional
Testing for Harvest Batch

Non-THC Infused Pre-Rolls

THC Infused Pre-Rolls

Processor creates Non-THC Infused Pre-Rolls from a single harvest batch/strain.
Production Batch Required
Batch Size in Regulations R. 5.3.7

The Production Batch is entered into Metrc at the end of the day and is the actual count of pre-rolls made in one day. See R. 1.2.13 for proper naming

Licensed Lab
Conducts required tests for Non-THC Infused Pre-Rolls from a single Production Batch
Compliance Test

Dispensary

Patient or Caregiver

Processor creates THC Infused Pre-Rolls (mixed harvest batches are allowed) to create new homogenized batch.
Production Batch Required
Batch Size in Regulations R. 5.3.7

The Production Batch is entered into Metrc at the end of the day and is the actual count of pre-rolls made in one day. See R. 1.2.13 for proper naming

Licensed Lab
Conducts required tests for THC-Infused Pre-Rolls from a single Production Batch
Compliance Test

Dispensary

Patient or Caregiver